

Disassembly

Figure 2
Battery Removal

- Remove the screws.
- Remove the screws.
- Remove the bottom case and locate the battery.
- Disconnect the cable and remove the screws.
- Lift the battery off the computer.

Removing the Battery

- Turn **off** the computer, turn it over to remove the keyboard ([page 2 - 5](#)).
- Remove screws **1** - **3** ([Figure 2a](#)).
- Remove screws **4** - **13** on the bottom case ([Figure 2b](#)).
- Remove the bottom case **14** up. The battery will be visible at point **15** on the computer ([Figure 2b](#)).
- Carefully disconnect the cable **16**, then remove screws **17** - **21** ([Figure 2c](#)).
- Lift the battery **22** off the computer ([Figure 2d](#)).
- Reverse the process to install a new battery (do not forget to replace all the screws and bottom cover).

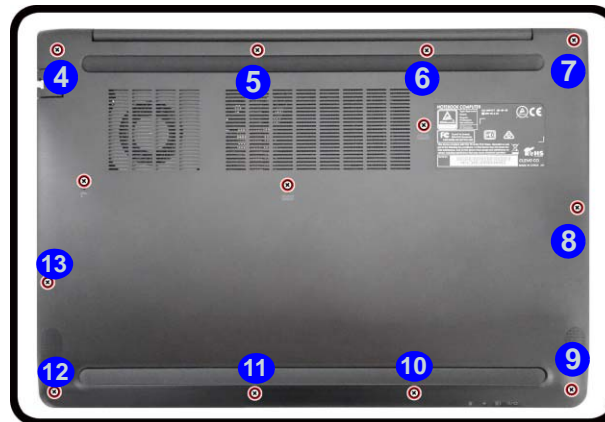
a.



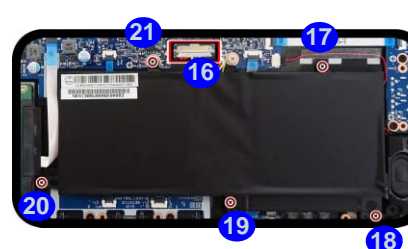
c.



b.



d.



e.



14. Bottom Case
22. Battery

- 18 Screws

Removing the System Memory (RAM)

The computer has two memory sockets for 260 pin Small Outline Dual In-line Memory Modules (SO-DIMM) supporting DDR4 2133MHz. The main memory can be expanded up to 32GB. The total memory size is automatically detected by the POST routine once you turn on your computer.

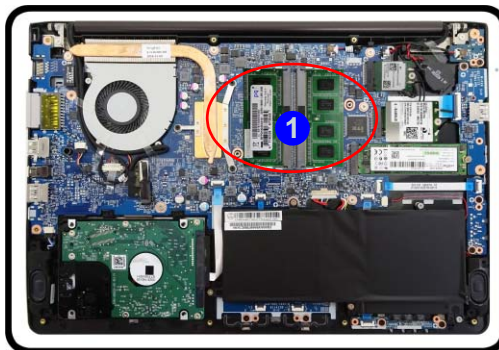
Memory Upgrade Process

1. Turn **off** the computer, turn it over to remove the keyboard ([page 2 - 5](#)) and battery ([page 2 - 6](#)).
2. The RAM modules will be visible at point **1** on the mainboard ([Figure 5b](#)).
3. Gently pull the two release latches (**2** & **3**) on the sides of the memory socket in the direction indicated by the arrows ([Figure 5b](#)).
4. The RAM module **4** will pop-up ([Figure 5c](#)), and you can then remove it.

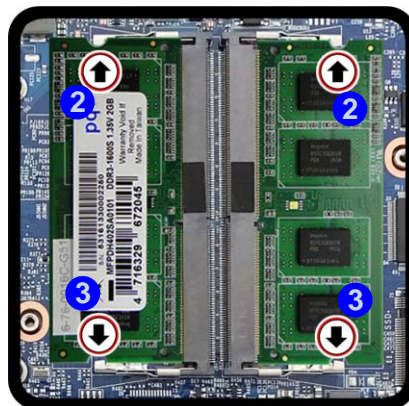
Figure 5
RAM Module Removal

- a. The RAM modules will be visible at point **1** on the mainboard.
- b. Pull the release latches.
- c. Remove the module.

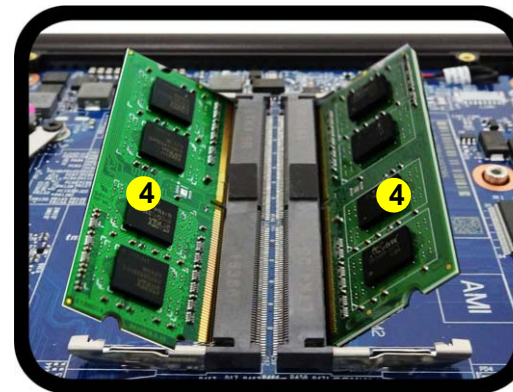
a.



b.



c.



Contact Warning

Be careful not to touch the metal pins on the module's connecting edge. Even the cleanest hands have oils which can attract particles, and degrade the module's performance.



Single Memory Module Installation

If your computer has a single memory module, then insert the module into the **Channel 0 (JDIMM1 / RAM1)** socket.



4. RAM Module